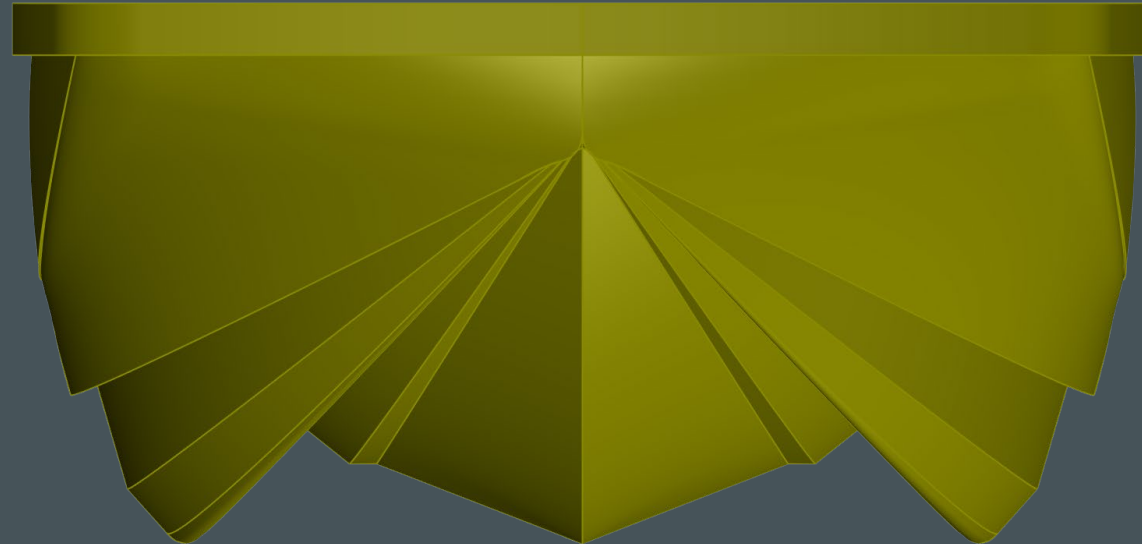

INTRODUCTION

PROJECT

DIVINAVI



COPYRIGHT© 2018 DIVINAVI - INTERNATIONAL B.V.

ALL RIGHTS ARE RESERVED. NO PART OF THIS PUBLICATION MAY BE REPRODUCED IN ANY FORM OR BY ANY MEANS, ELECTRONIC, MECHANICAL, PHOTOCOPYING, RECORDING, OR OTHERWISE, WITHOUT THE PRIOR WRITTEN PERMISSION OF THE COPYRIGHT

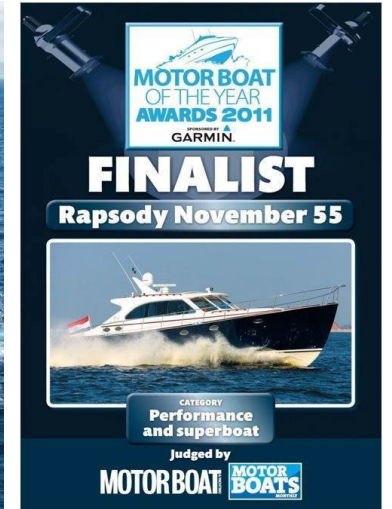
DIVINAVI

VILLA BOAT
CENTER CONSOLE
TRAWLER YACHT

M-SERIES
420 & 530

INTRODUCTION
PROJECT
DIVINAVI





WHO ARE WE

DIVINAVI is established in 2017 by Birol Ernalbant, who is a Naval Architect and operational since 1979 in the shipbuilding industry, studied shipbuilding and naval architecture, worked for big companies as Proteksan, Istanbul (first inhouse yacht designer and production manager - now part of Oceanco, Rotterdam) and Perini Navi, Viareggio. Has managed 16 sailing yachts with Perini Navi, where of the Maltese Falcon 87 mt, Designed for Sunseeker the first sport 29 and established in 2003 Dutch Yachting Company and later Rapsody Yachts where he designed and build his own Rapsody R-series such as the Rapsody November R55, Rapsody R36 and the Rapsody R29.

The aim is with the new design is to make the finest yachts in the world as we did before and make again the best boat of the year, as was done in 2011 with the Rapsody November 55. We believe strongly in the concept of universal multi platform hull of the M-Series.

We are a group of people who also are highly experienced in boatbuilding and an experienced sales organization behind us. We also have the best boat builders in Turkey and with them we form the DUTCH – TURKISH BOATBUILDERS ASSOCIATION.

We will build the model and the mold in Turkey, the production will start soon and we will fine tune the production in such a way that it is build together with the serial building system. The final aim is to produce the boat in Holland. For this we must build systematic and low cost. Our biggest advantage is that we know the Turkish, Italian and Dutch Yacht building industry and have the best connections, subcontractors, suppliers and co-builders who are working together with us to realize this project.

DIVINAVI M-SERIES



The all new DiviNavi is "The House Boat" to live in.

It will give the Owner all what they need on board and to live in it freely as in their own house.

The DiviNavi M-Series Houseboat is designed to be on a real house on water but with all the safety and performance of a real boat. It has all the facilities and comfort as it should be in a warm and safe house.

The DiviNavi M-Series Houseboat is available in different sizes and with single or split multi-level deck options.

DiviNavi M-Series Houseboats are a long lasting assets just like you should expect from a real house. It is composite and it cannot corrode like steel or aluminium hull or hulls made out of just polyester and glass which can have osmosis or delamination.

DiviNavi M-Series houseboats are made with EpoVin and Core material which does not absorbs water and is a sandwich core module which makes the vessel double skinned on the sides which also prevent condensation and has it own heat or cold insulation resistance.

The M-420 x 15 mt length for sample is capable to sail a complete day on sunlight on her solar panels alone with equipped electromotors on conventional shafts which are installed in propellor tunnels to give her a shallow draft and a low shaft angle. This all can silent on Sun and Battery power.

The Flagship M-420 x 15 mt Electra Performance is equipped with a standard 25 kW generator and waste water treatment system and clean to get in all Blue Flag marinas.

She is a joy to live in as all parts of the boat are individual living areas which can also be covered and closed.

The sundeck is another paradise to be with, there is a sun protection top which can be lowered down by bad weather such as strong wind or lowered by high speed by vessels which are equipped with a diesel-electric hybrid propulsion system. Speeds over 25 knots can be achieved at ease...with your House Boat. All sailing houseboats are standard CE – C category classified – Inland and Coastal Waters.

Go and enjoy your cruise from North Europe straight down to the Sun of the Mediterranean Sea through the beautiful fields of France into the Côte d'Azur... or where ever you heart takes you to.

EXECUTIVE SUMMARY

WHAT'S THE PURPOSE

The DIVINAVI Marine Group is a maritime organization whose field of operation is divided in a few disciplines.

Design of military special craft, commercial vessels, private yachts and recreational floating objects.

The houseboat project is actually designed to be commercialized in big amounts as a rental or as a floating holiday village consisting of many of these houses next to each other. But it also offers comfort and luxury for the private user, the main design concept is that the boat can be build with an expandable mold system in the base sizes of - 11,50 mt - 13,25 mt – 15,00 mt plus an additional platform of 1.60 mt. The secondary possibility is that the mold is a split mold where can also go in the width and in the length with tween parts to a floating pontoon which can be motorized of 8 mt x 22 mt.

CONCEPT & MODELS IN FIRST PRODUCTION

- WE HAVE MADE THE DESIGN ON TWO BASE CONCEPTS AND 4 MODEL CONCEPTS:
- BASE MODELS ARE :
 - HOUSE BOATS – SLOW STEAMING BOAT WITH SMALL ENGINES TO SAIL UNDER MAXIMUM HULL SPEED BUT WITH ENOUGH POWER TO OVERCOME WIND AND BACK STREAMING WITH CONVENTIONAL SHAFT PROPULSION IN INSERTED SHAFT TUNNEL
 - THE CONSOLE BOAT & MOTOR YACHT– BIGGER ENGINES, FASTER BOAT, TWIN STERNDRIVES OR TWIN JET DRIVES – A RUGGED BOAT CONCEPT FOR THE REAL SEA LOVER WHO WANTS TO BE AT SEA ANY TIME OF A GOOD OR BAD WEATHER FORECAST
 - THE MODELS OF THE BOAT CONCEPT
 - THE HOUSEBOAT MODEL
 - THE CENTER CONSOLE - TENDER MODEL
 - THE COMMERCIAL BOAT MODEL
 - THE PRIVATE TRAWLER YACHT MODEL

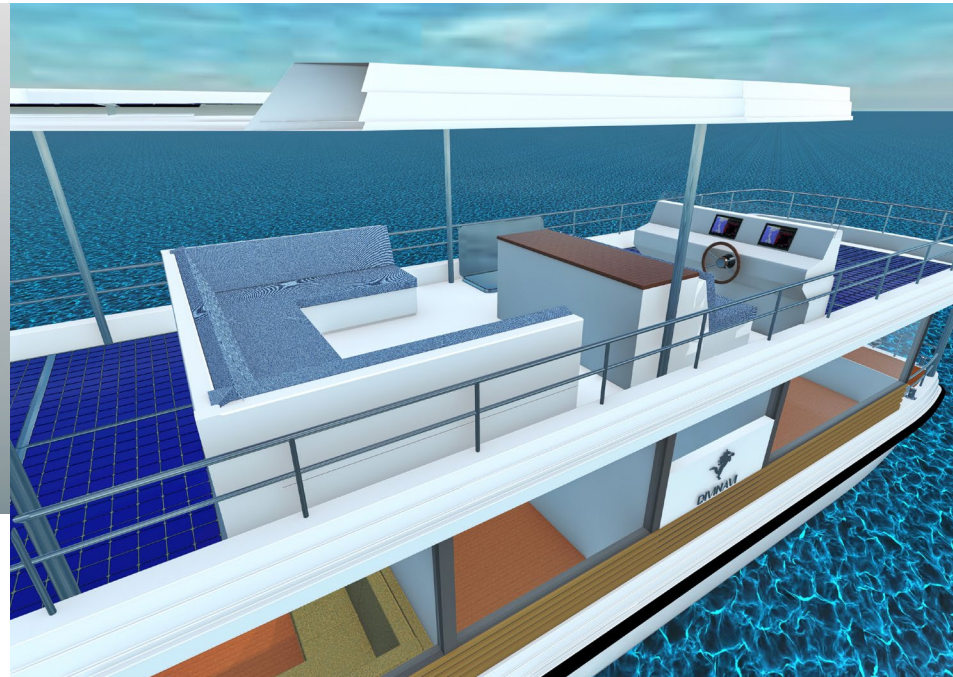
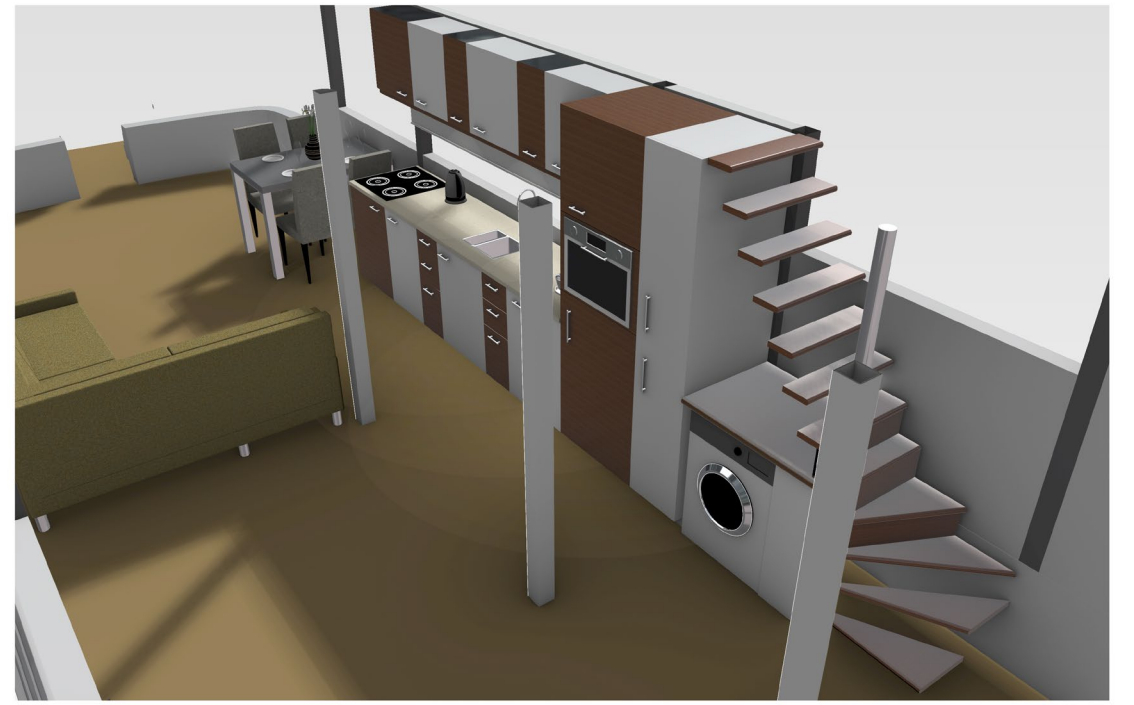
THE HOUSEBOAT

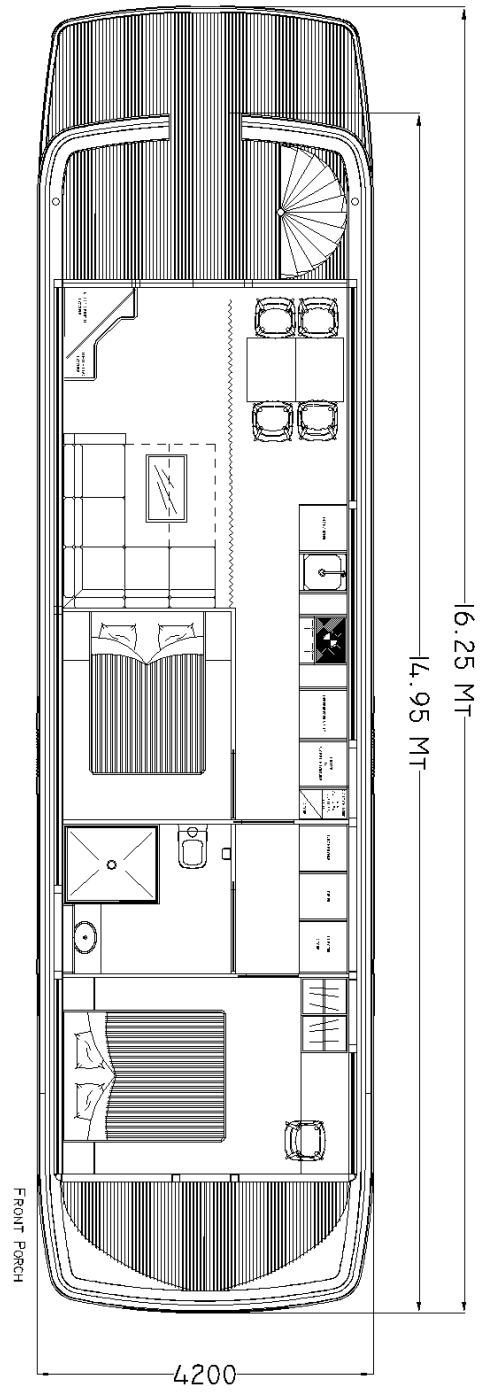
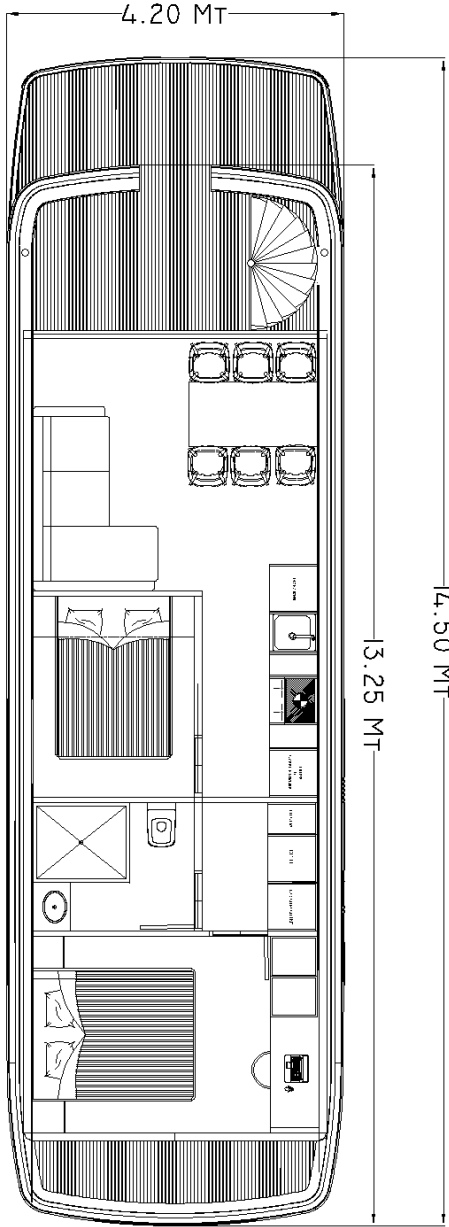
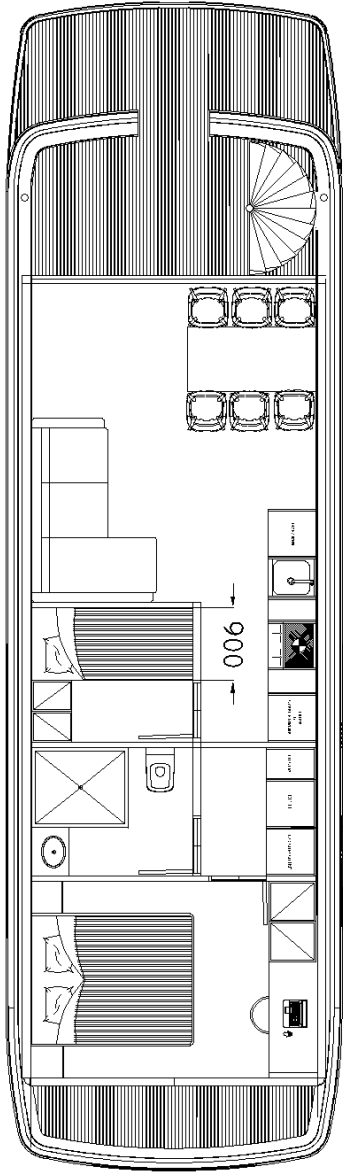
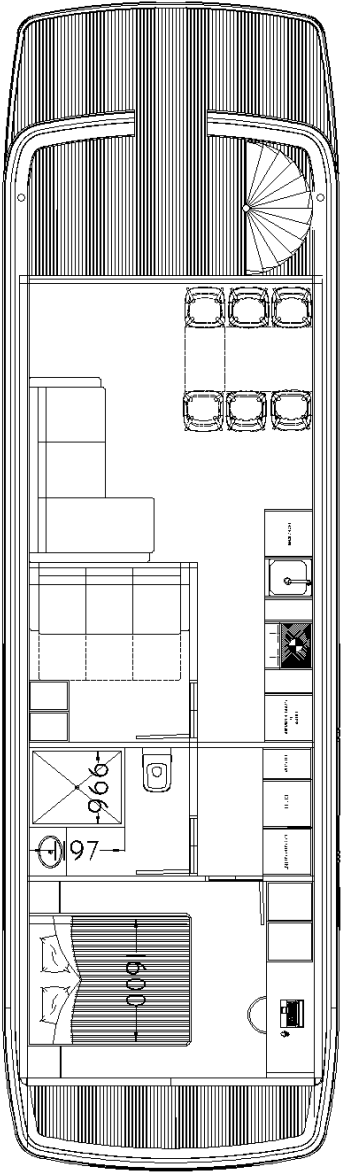


Technical Specification

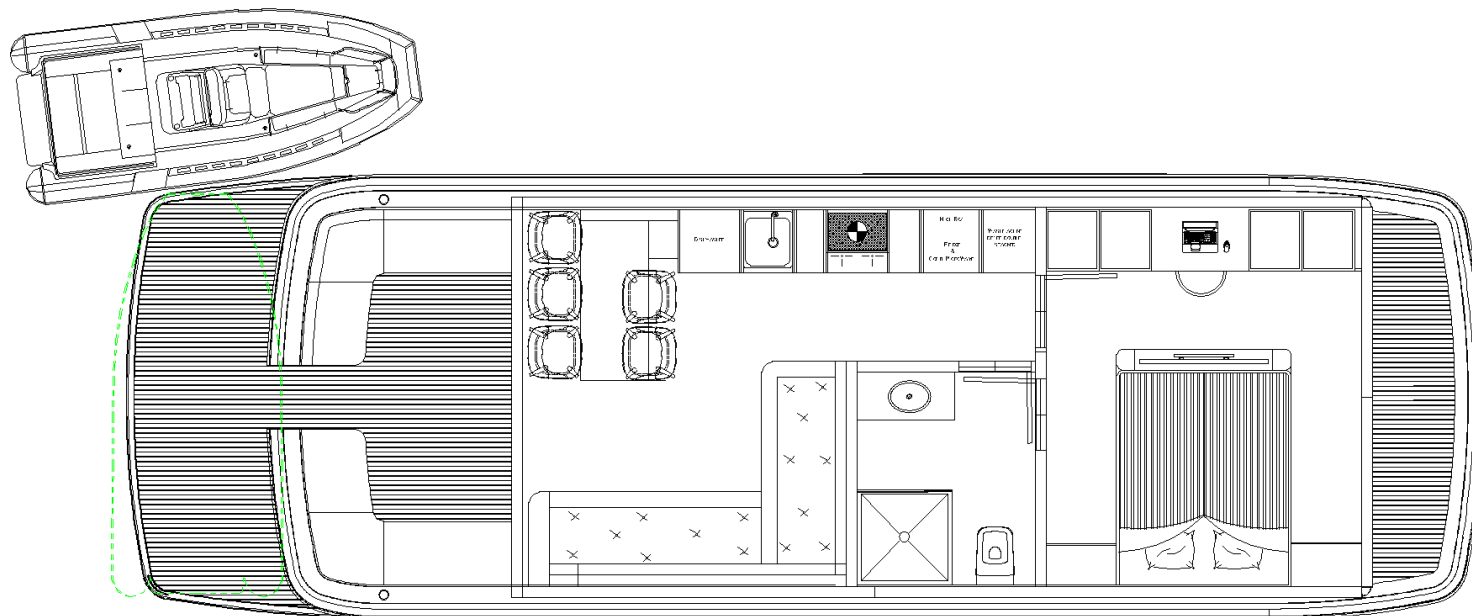
Loa	16,55 mt
LoH	14,97 mt
LwL	12,25 mt
Beam	4,2 mt
Draft	0,67 mt
Air Draft	3,89 mt
Air Draft ²	5,99 mt
Platform Height	0,6 mt
Displacement	23 Ton



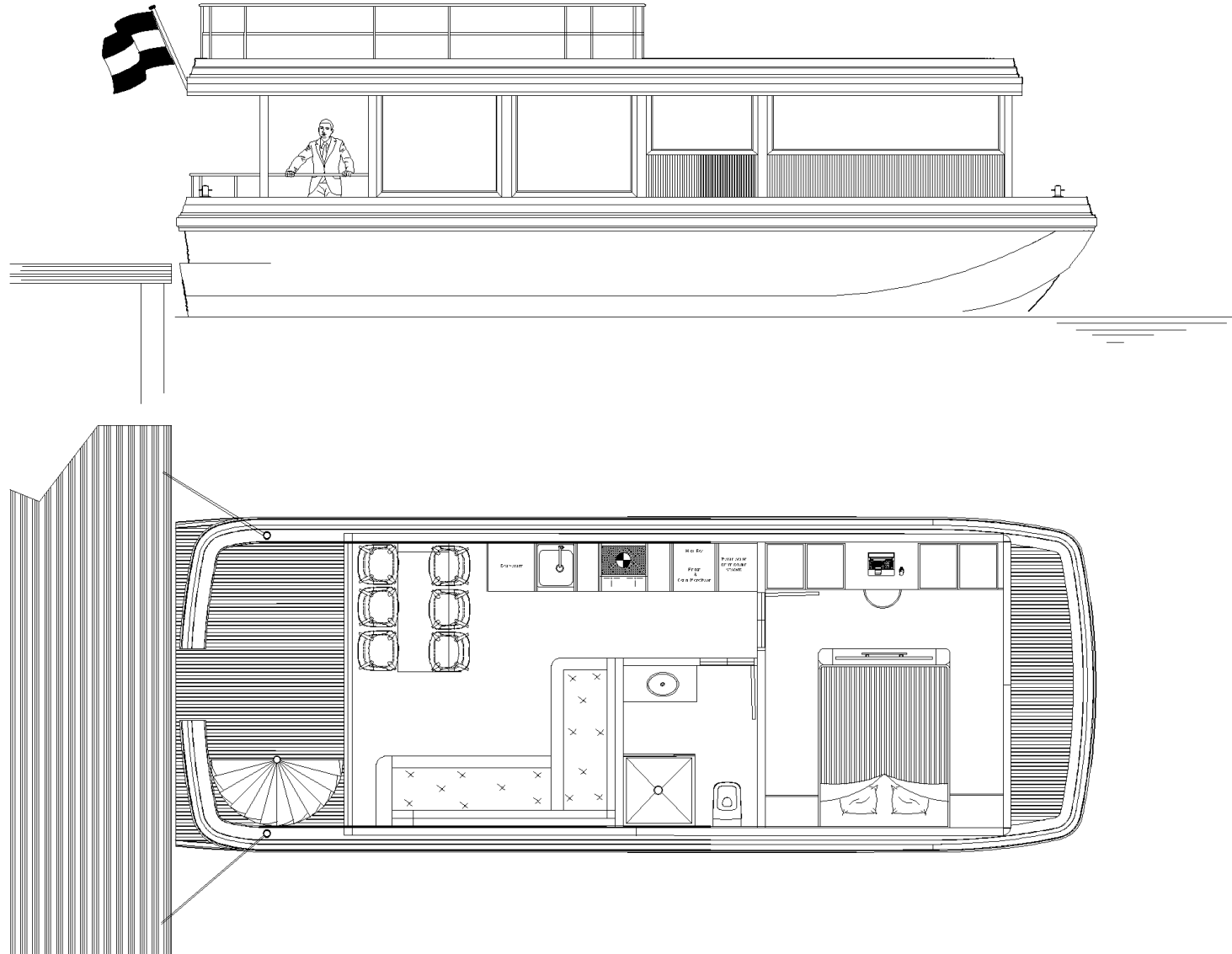




Gentlemen's House Boat



RENTAL STATIC BOAT - No Propulsion all mains from land supplied and discharged!



THE HOUSEBOAT

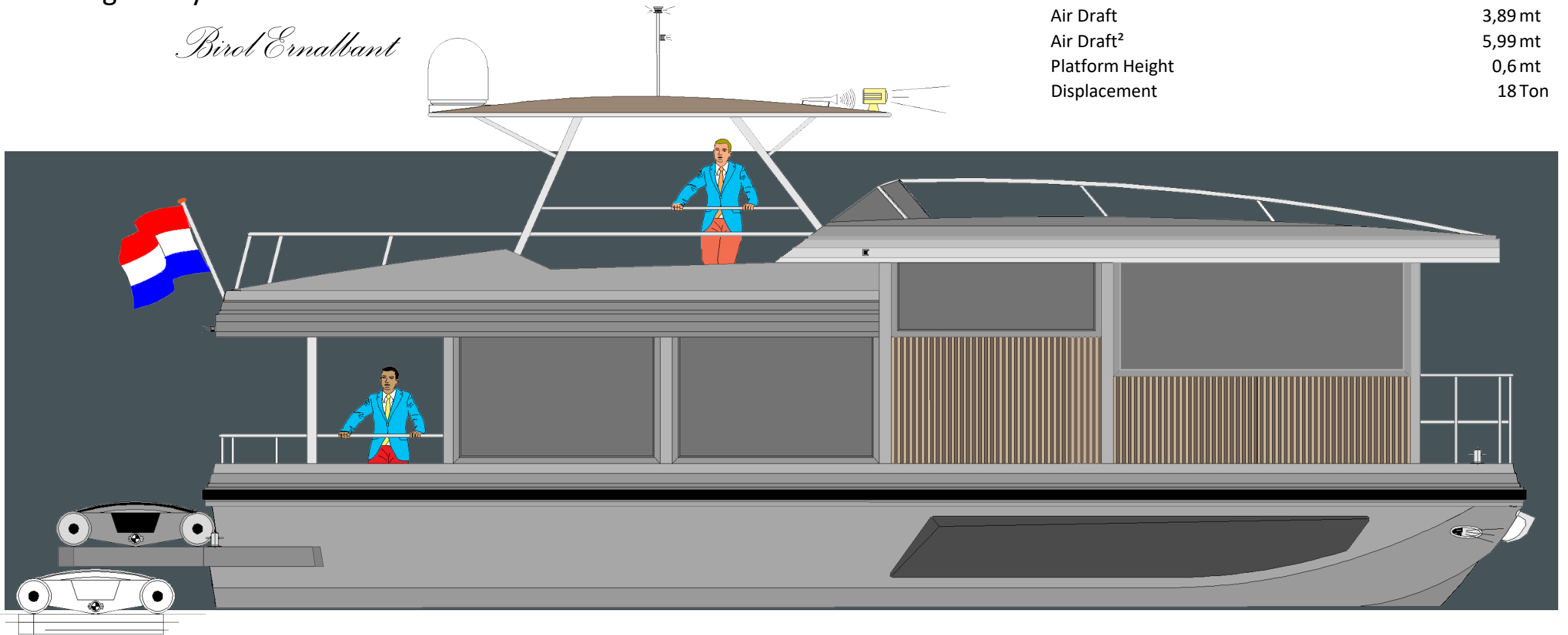
“de Ville”

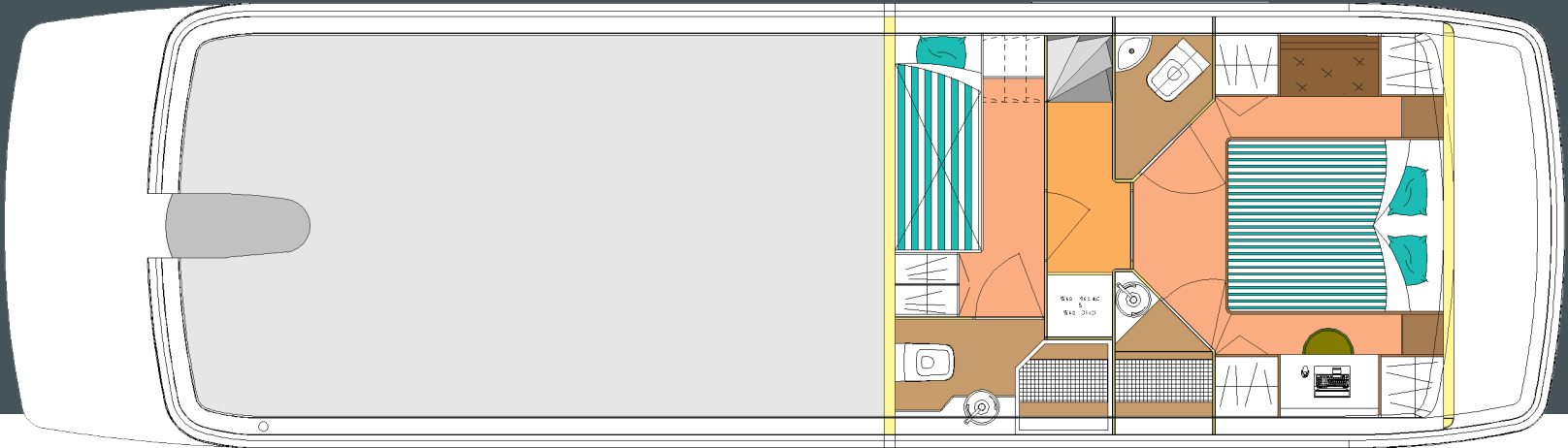
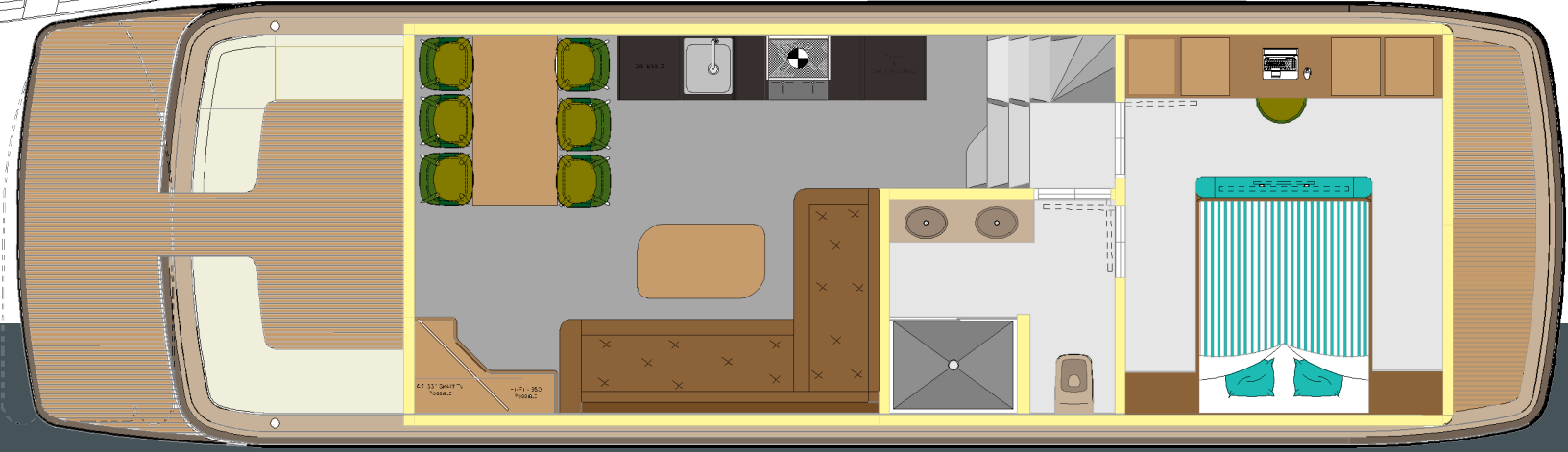
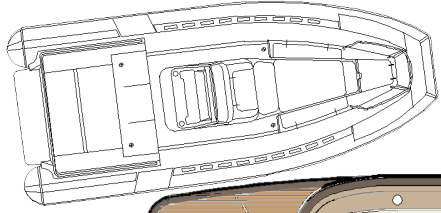
Designed by:

Birol Ernalbant

Technical Specification

Loa	14,5 mt
LoH	13,25 mt
Lwl	12,25 mt
Beam	4,2 mt
Draft	0,67 mt
Air Draft	3,89 mt
Air Draft ²	5,99 mt
Platform Height	0,6 mt
Displacement	18 Ton





RENTALS

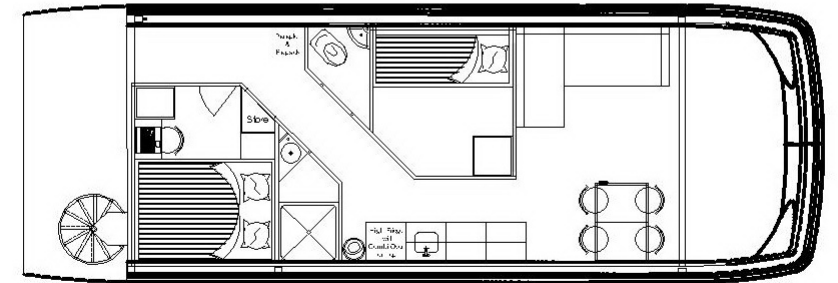
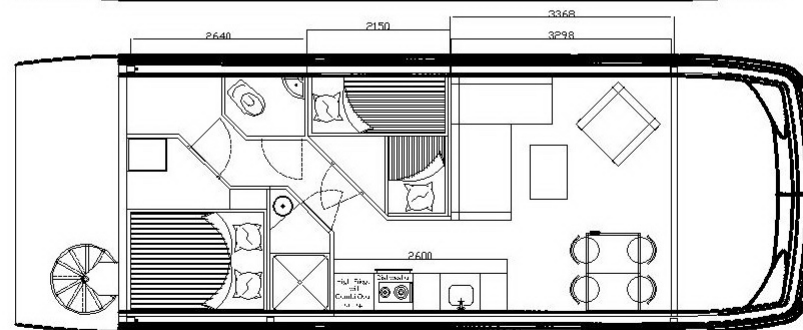
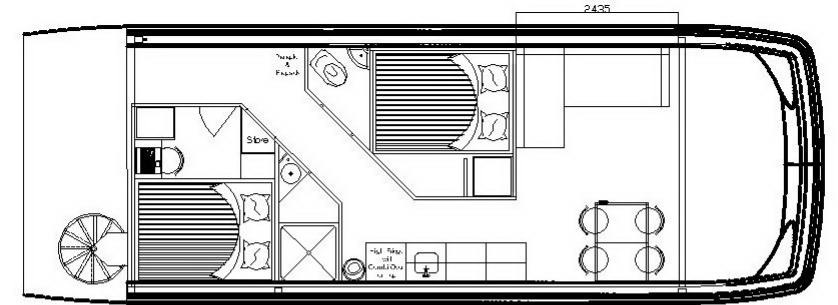
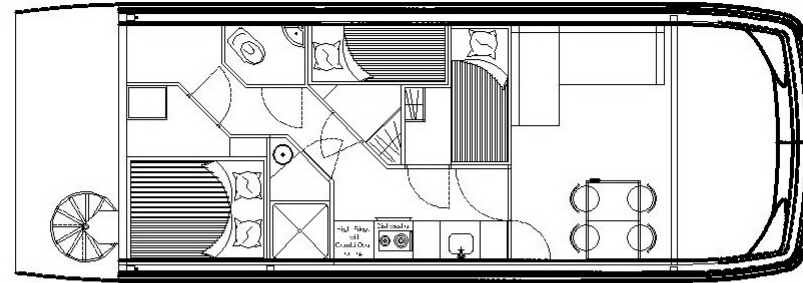
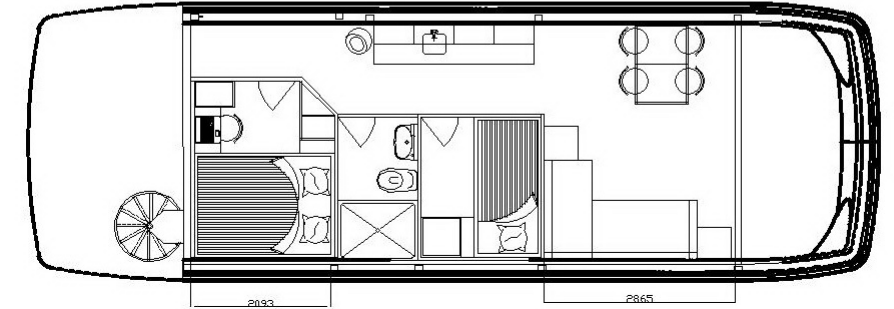
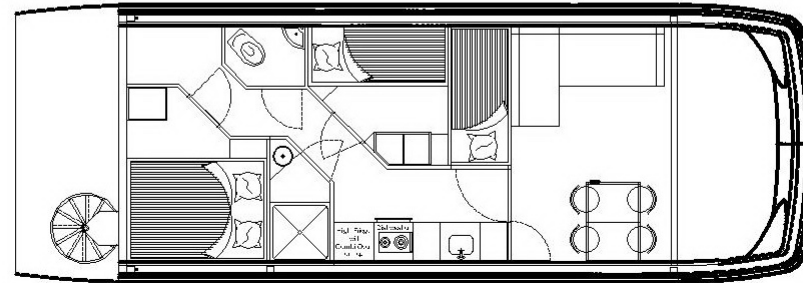
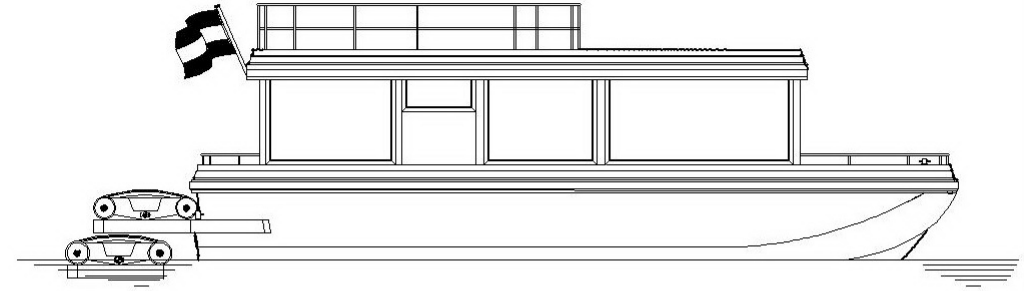
Rentals are available in static form. So no engine and no tanks. All freshwater, greywater, electric are direct connected to the shore.

We also have the dummy proof robust but with all comfort strong build moving boats which can be delivered with various propulsion options.

- -Outboard
- -Conventional shaft diesel engine in prop tunnel for shallow draft
- Conventional shaft electric or diesel electric hybrid
- Sterndrive
- In single or twin installation depending on sail area

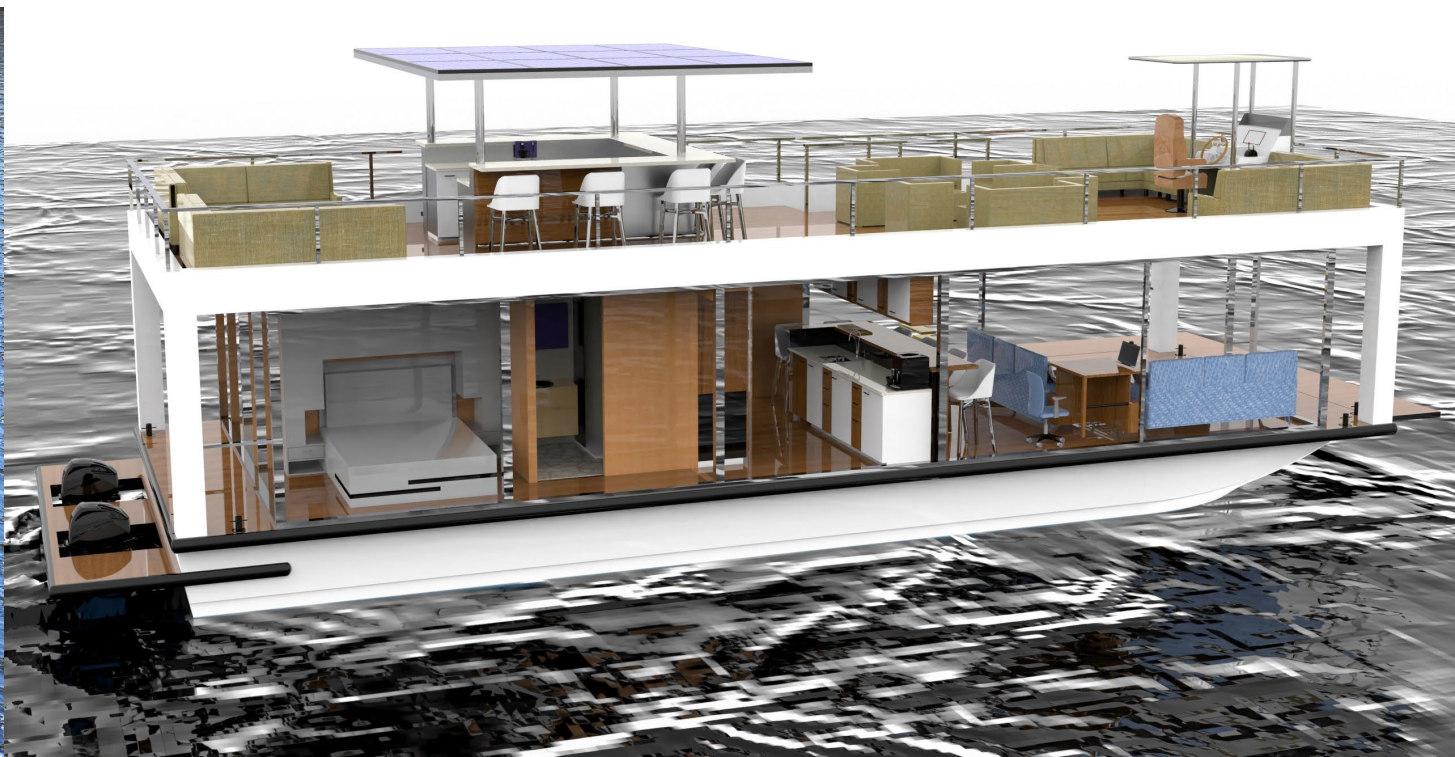
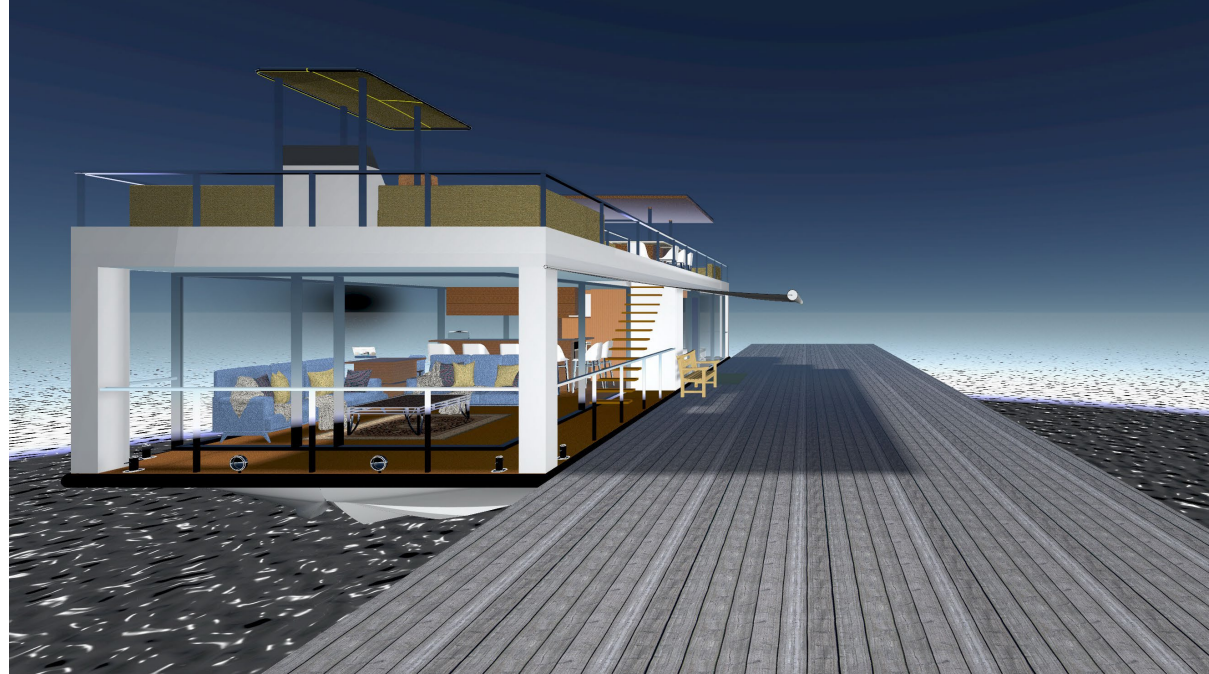
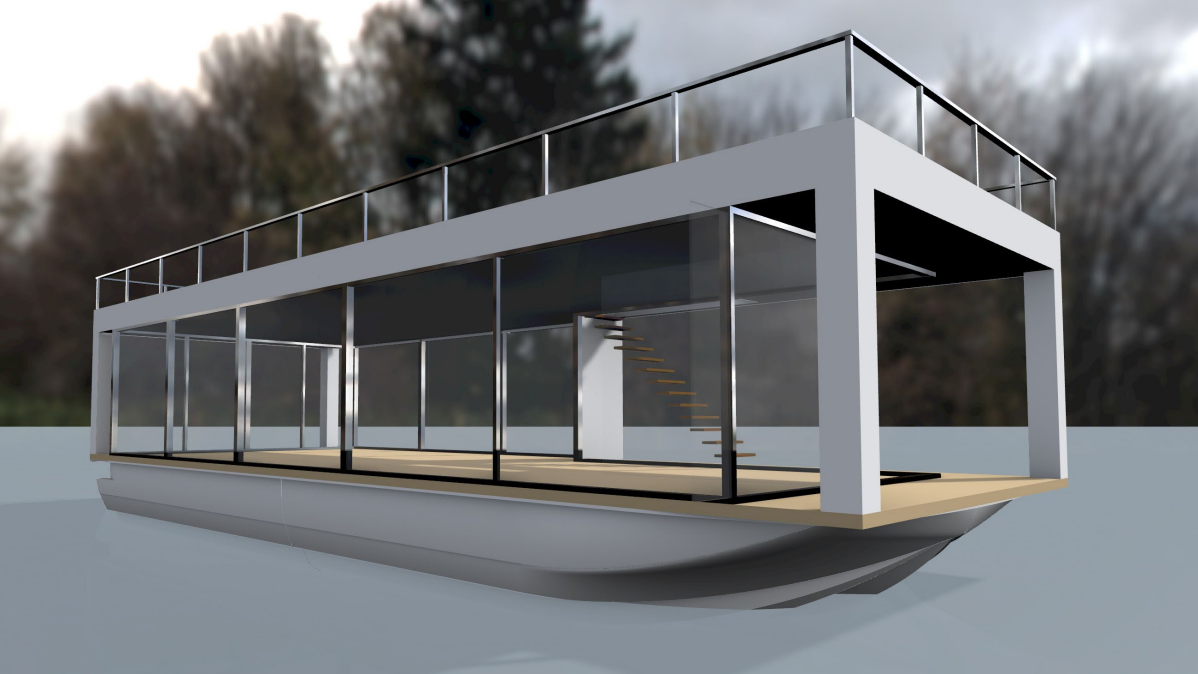
Technical Specification Frysian Mar Lodge 11,50 mt

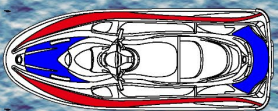
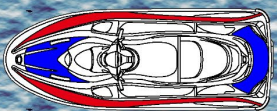
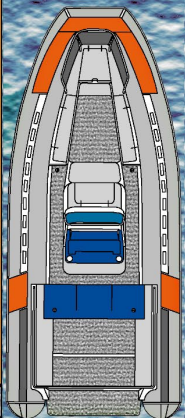
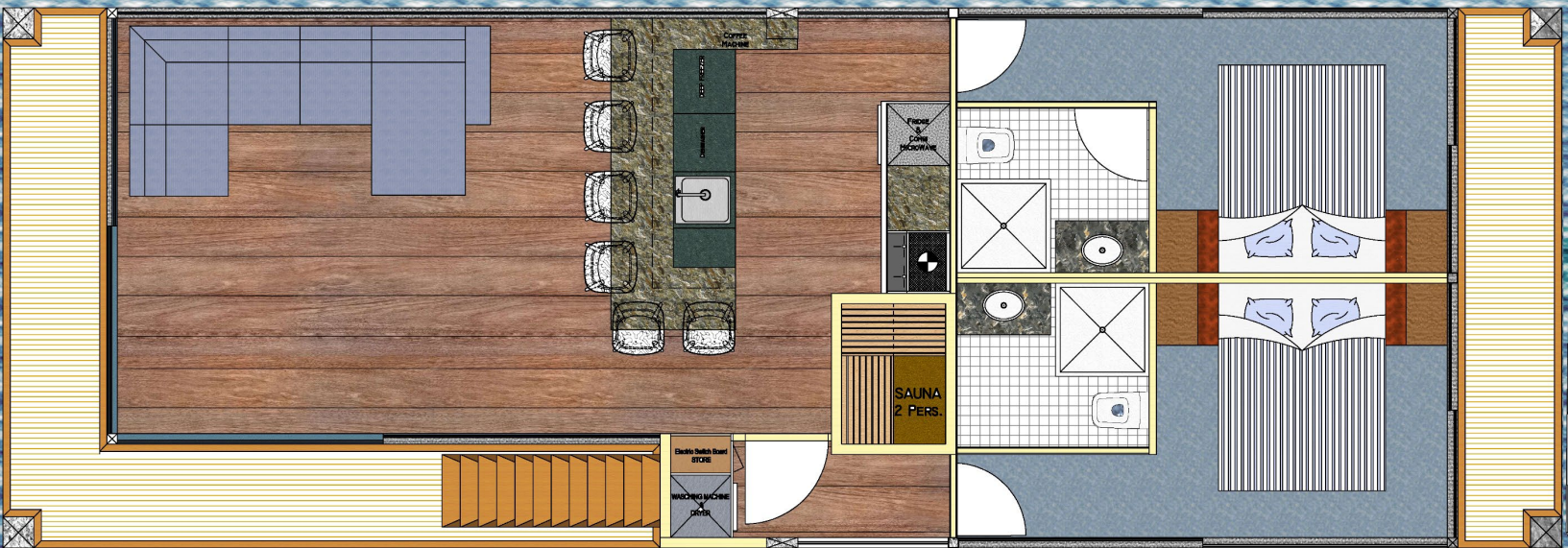
Loa	12,75 mt
LoH	11,52 mt
Lwl	10,51 mt
Beam	4,2 mt
Draft	0,67 mt
Air Draft	3,19 mt
Air Draft ²	3,99 mt
Platform Height	0,6 mt
Displacement	16 Ton



VILLA BOAT 15.00 MT X 5.30 MT

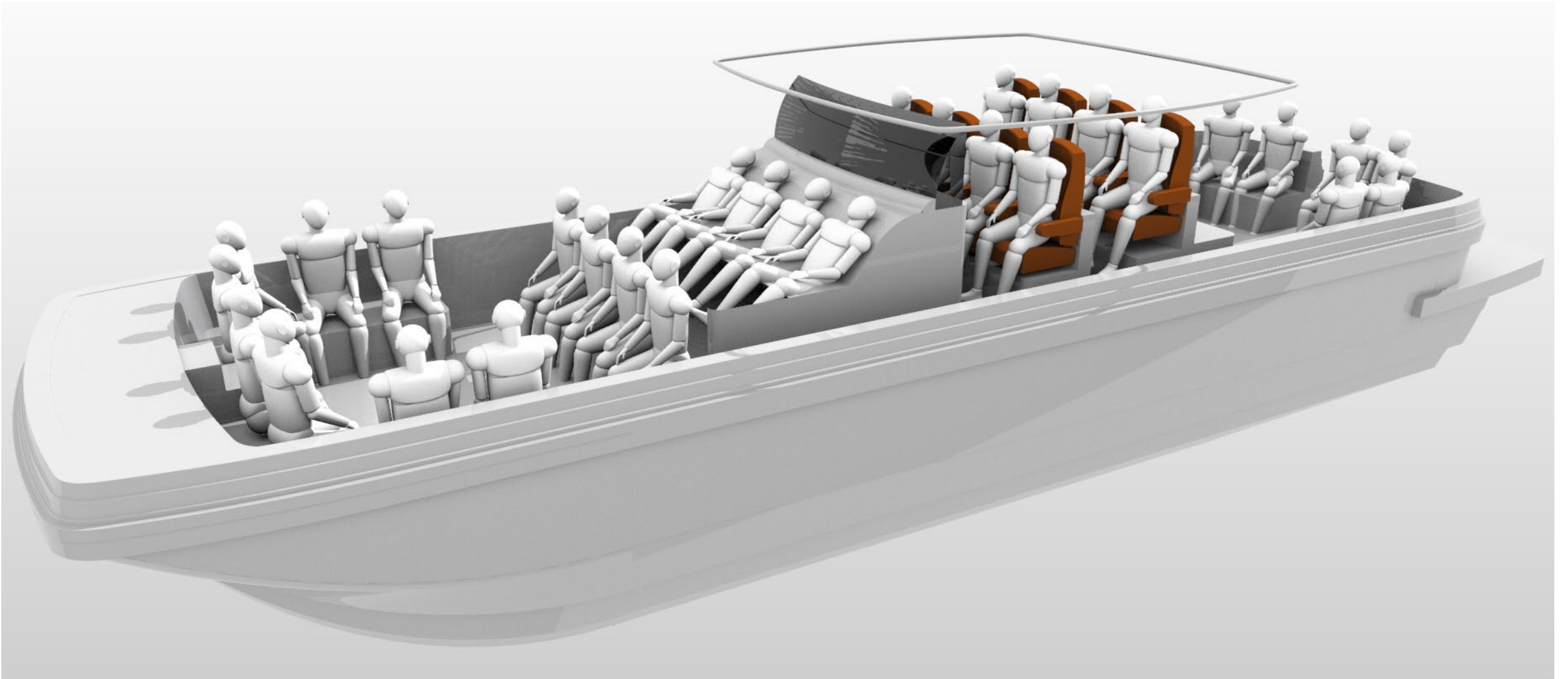






THE TENDER BOAT

(CENTER CONSOLE BOAT)

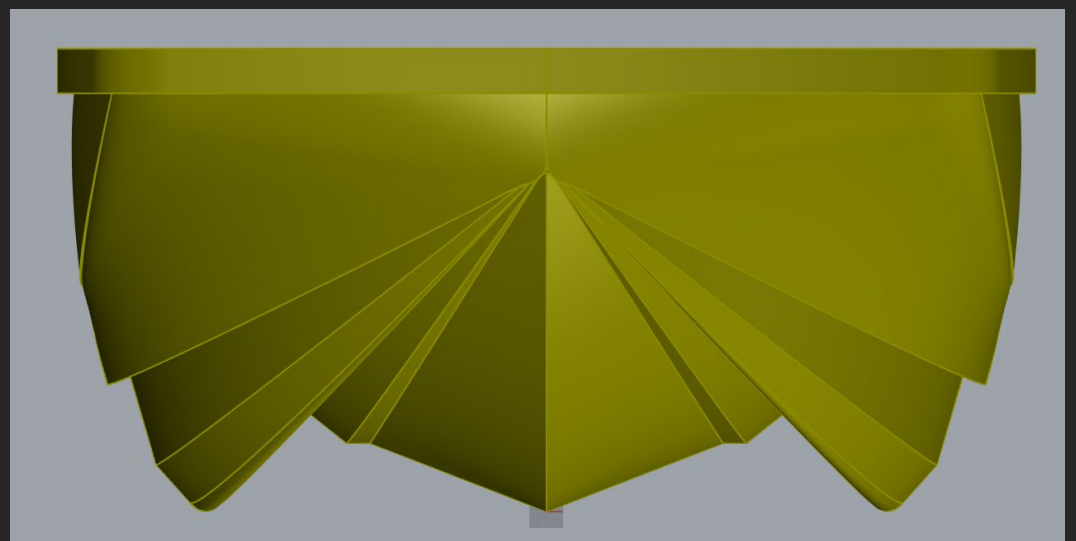
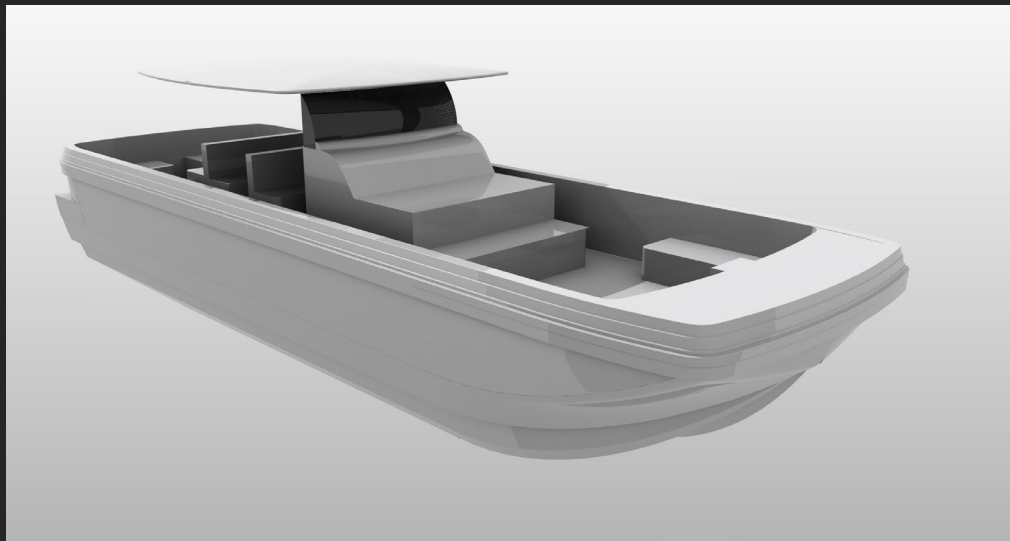
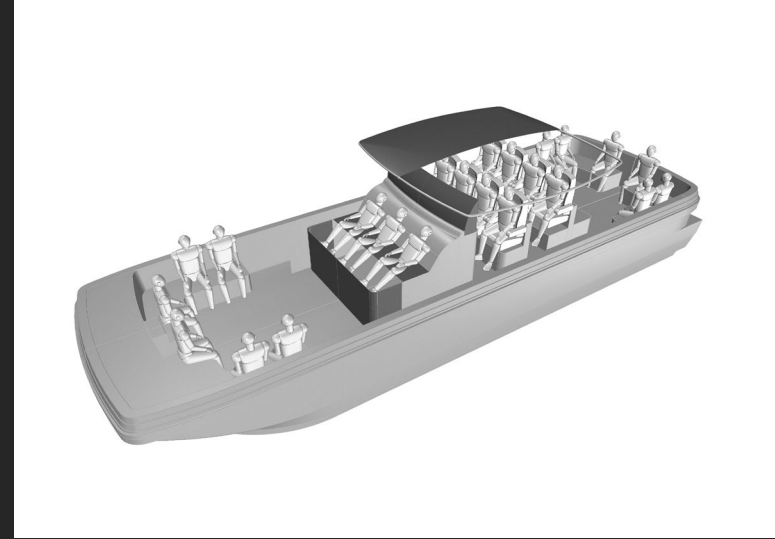
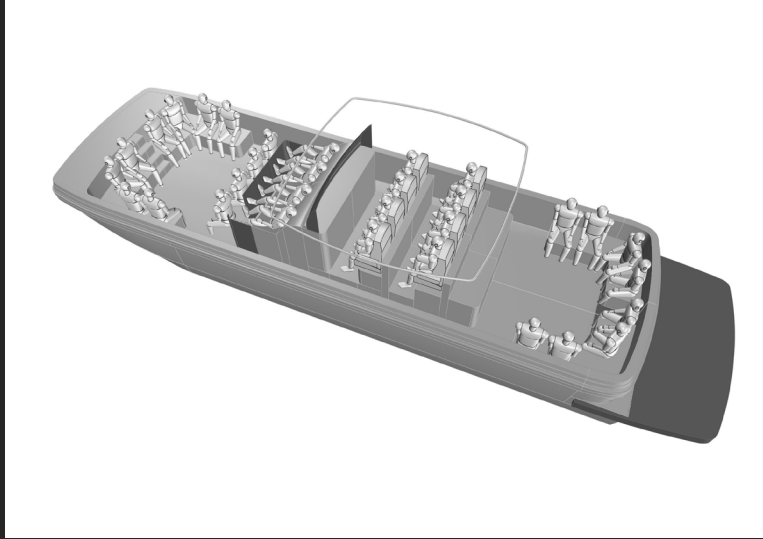




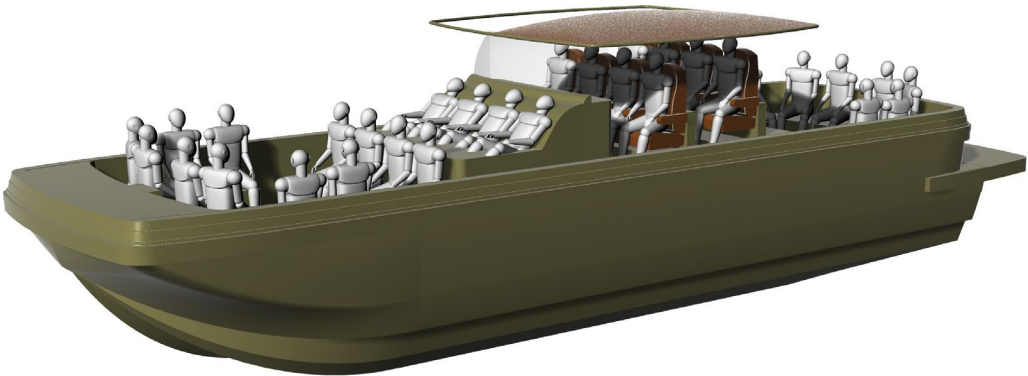


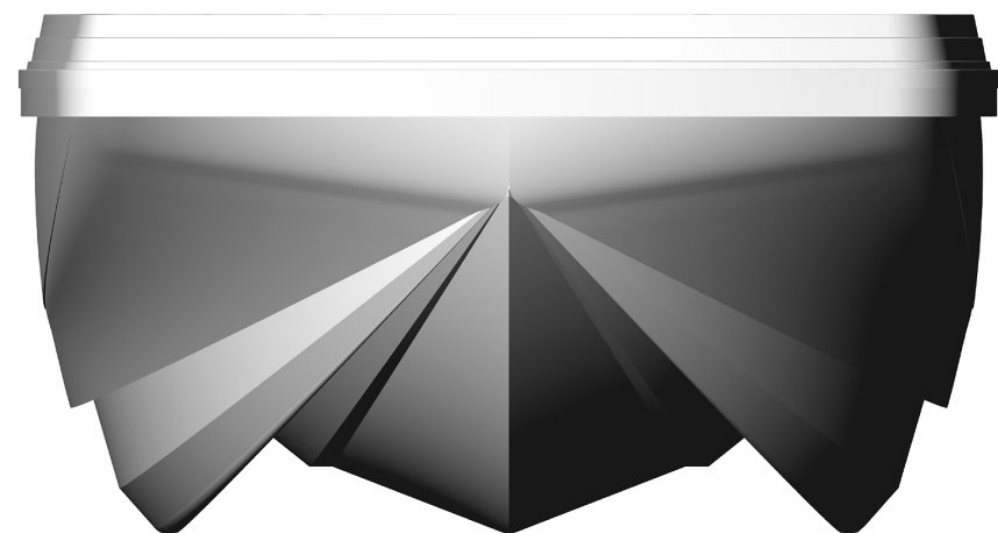
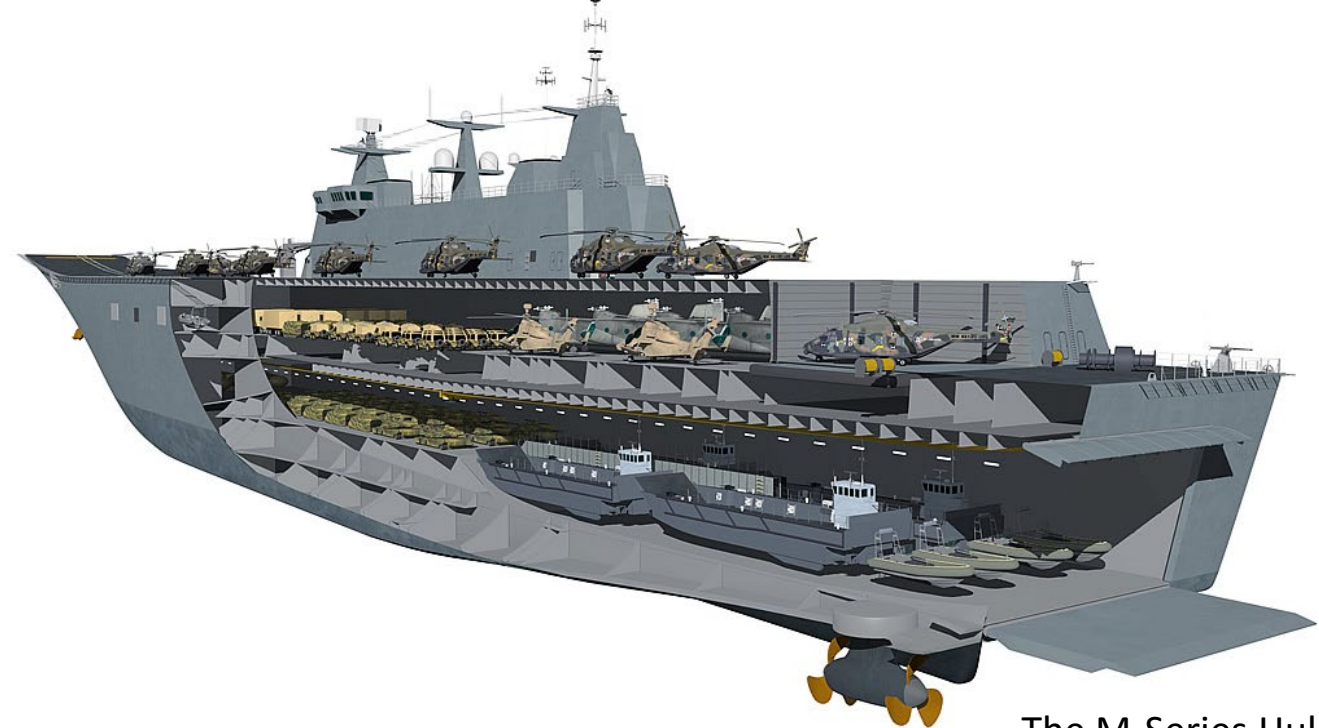






THE MILITARY BOAT MODEL



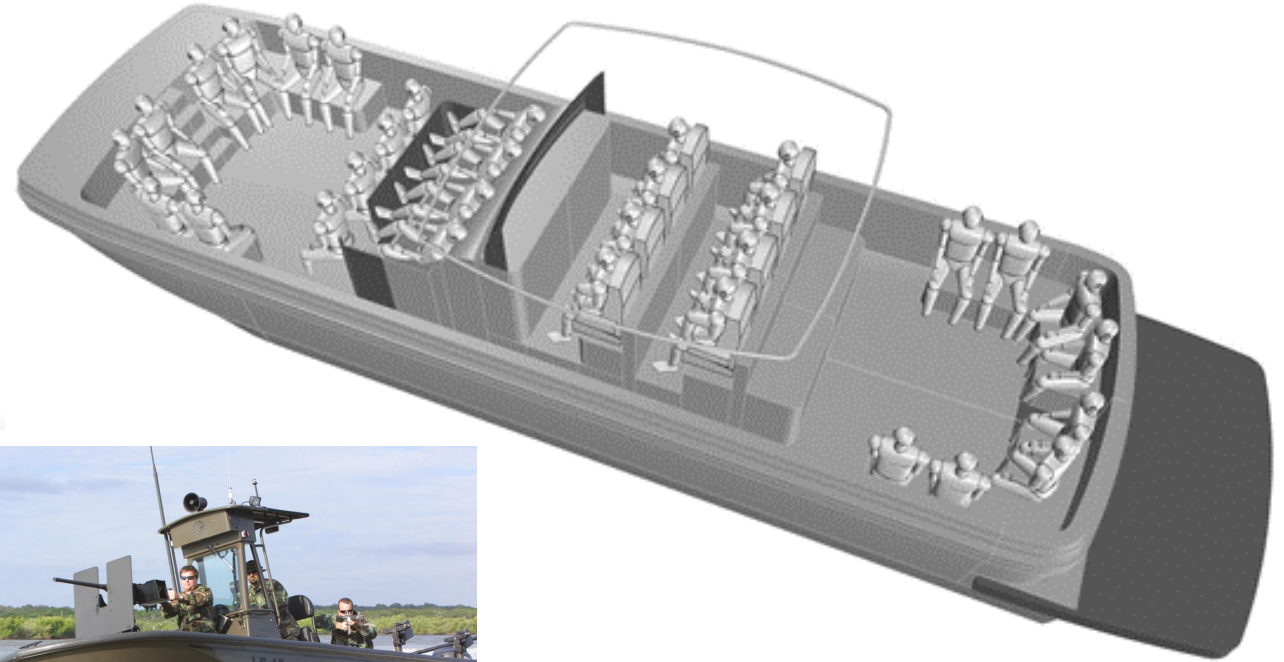
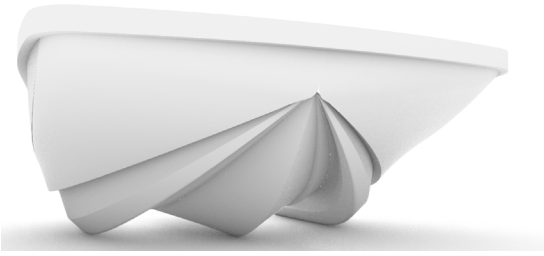


The M-Series Hull doesn't need any cradle to land on a Amphibious LHD vessel like TCG "Anadolu", Spain "Juan Carlos", Portugal Novo Plataforma Naval Multifuncional, Australia LHD Canberra Class.

Good for 9 to 12 units of M-Series on each vessel. Time saving beaching model thrusted by Jet Drives. No obstacles!



Samples boat types as it can be used incl. Unmanned Stealth Maritime Surveillance Vessel!



COMMERCIAL TRAWLER TYPE

The commercial trawler type has a much bigger space as the following samples in the bow area as the most boats has a pointed front while the M-Series has a square bow. Which creates a much more space above and below deck to be used as office or crew area, wc, pantry, ambulance, taxi, pilot, patrol.

These boats can be equipped with sturdy Conventional Shafts in propellor tunnels for shallow draft or Jet Drives which they can land on any beach or landing vessel or Amphibious Assault Ship (LHD/LHA)



Samples of boat types as it can be used



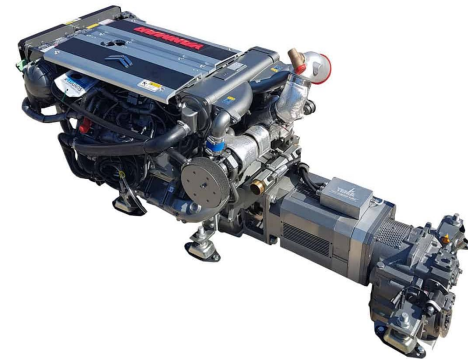
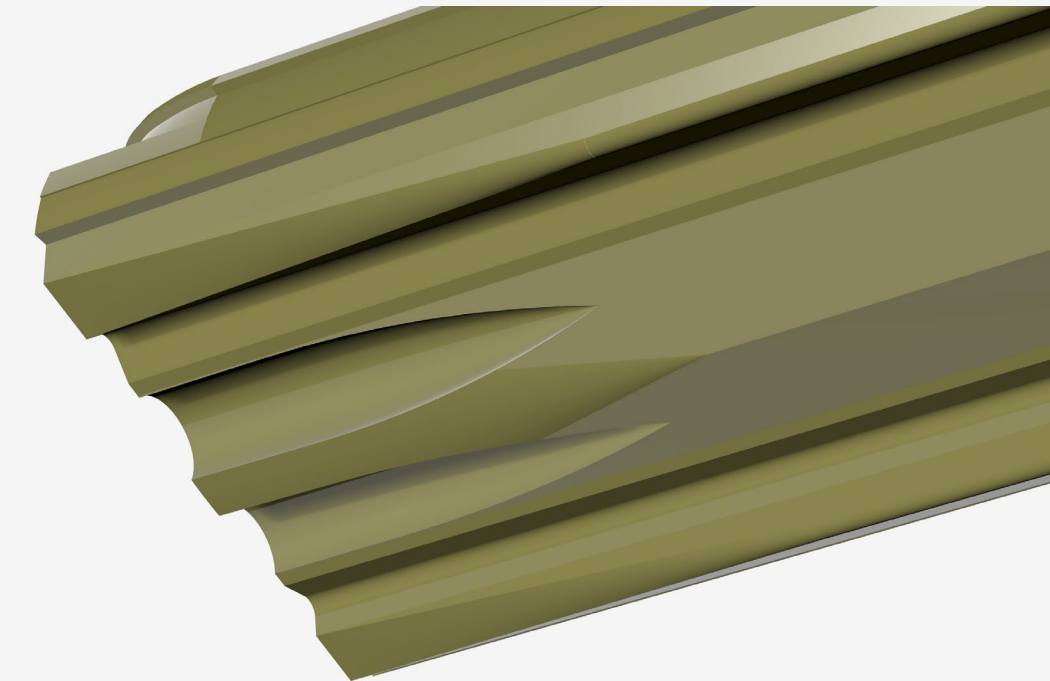
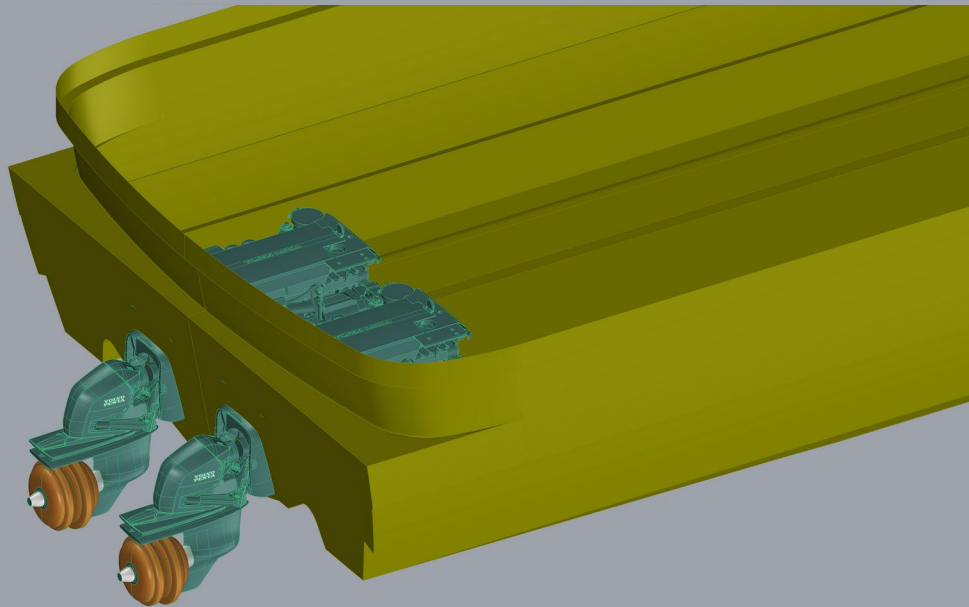
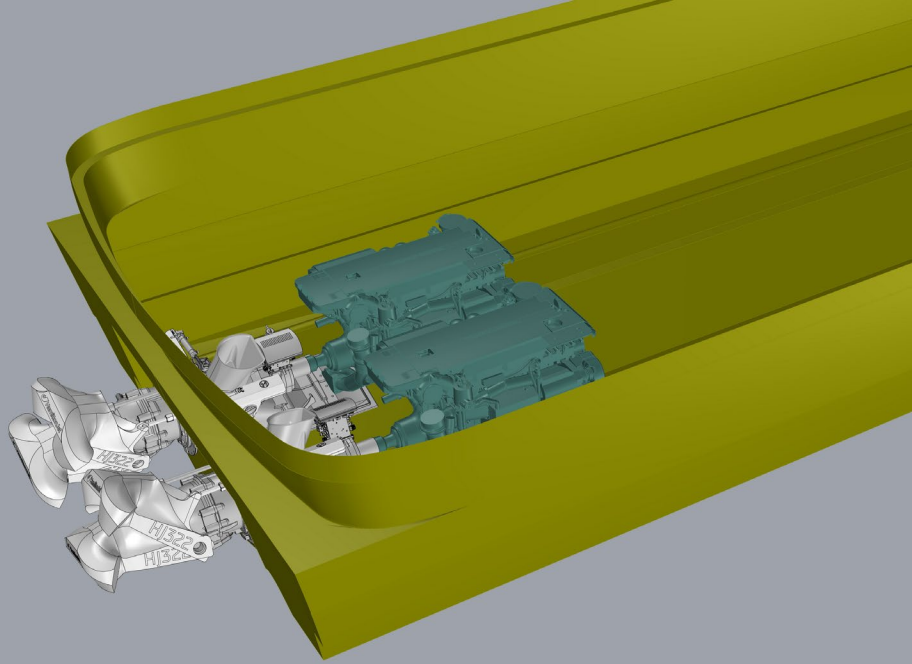
Samples of boat types as it can be used

THE PRIVATE YACHT CONCEPT “EXPLOTRA 45”



Propulsion Types

- ❖ Conventional Shaft
- ❖ Jet Drives
- ❖ Stern Drives
- ❖ Outboards on Gill Brackets
- ❖ Electric drive – Conv Shaft
- ❖ Hybrid Diesel Electric Conv. Shaft
- ❖ Electric Pods Diesel Gen. driven



REFERENCES



FINALIST

Rapsody November 55

CATEGORY
**Performance
and superboat**

Judged by

MOTOR BOAT PRESENTS **MOTOR BOATS** BOATFEST





AEROVISIO  [®]
LUCHTFOTOGRAFIE



**MOTOR BOAT
OF THE YEAR
AWARDS 2011**
SPONSORED BY
GARMIN.

FINALIST

Rapsody November 55

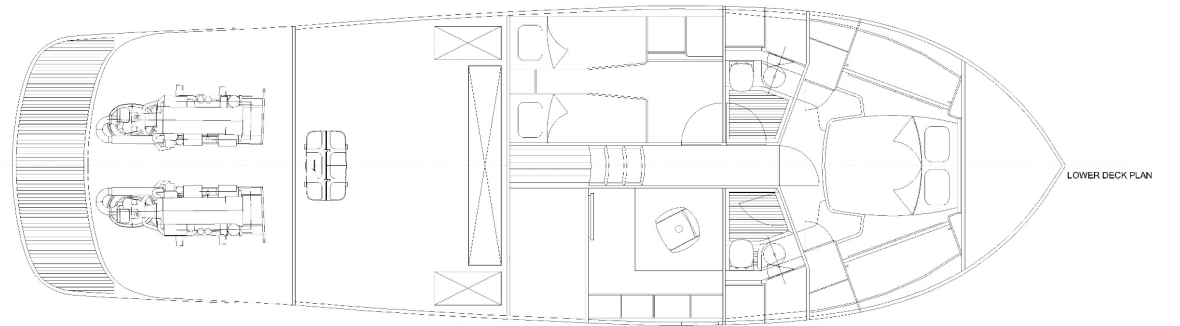
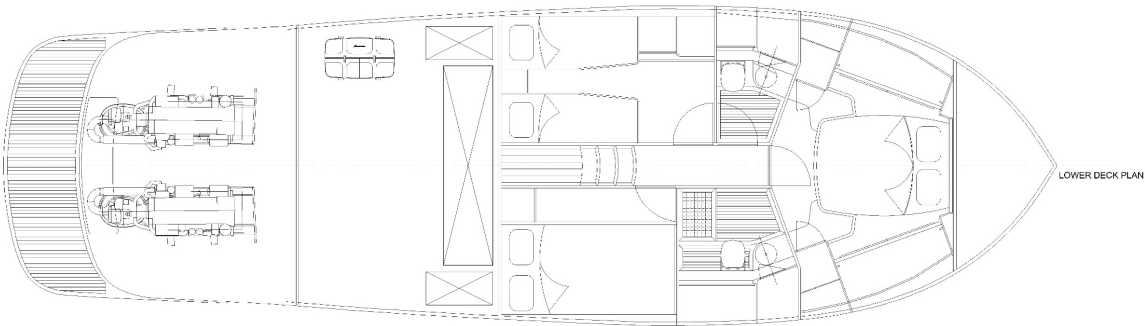
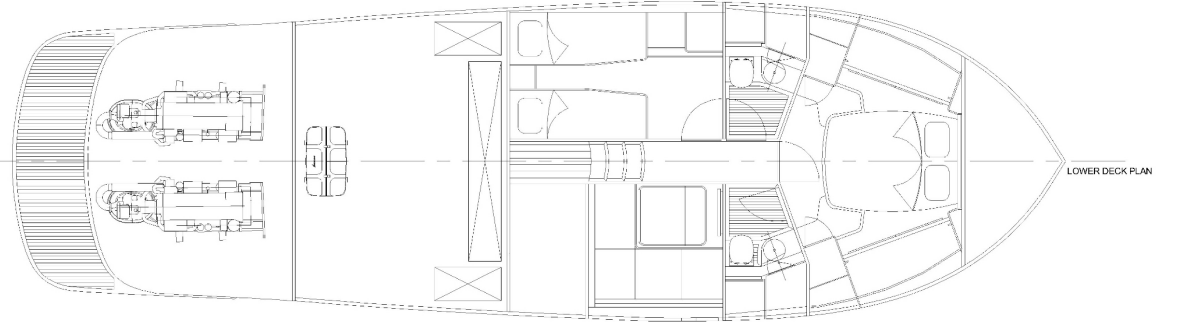
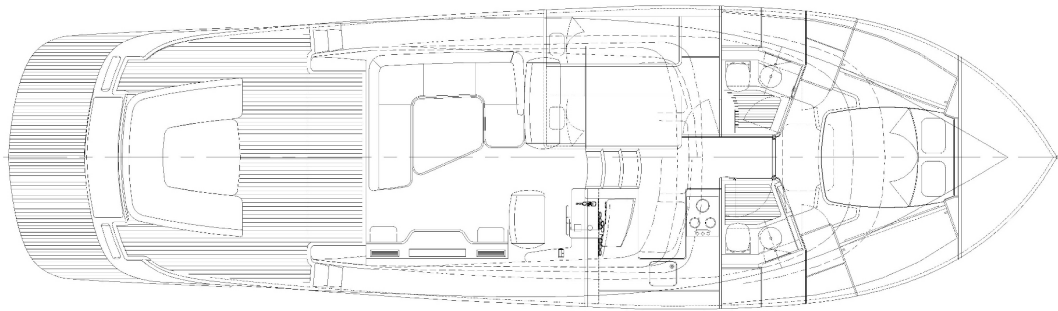
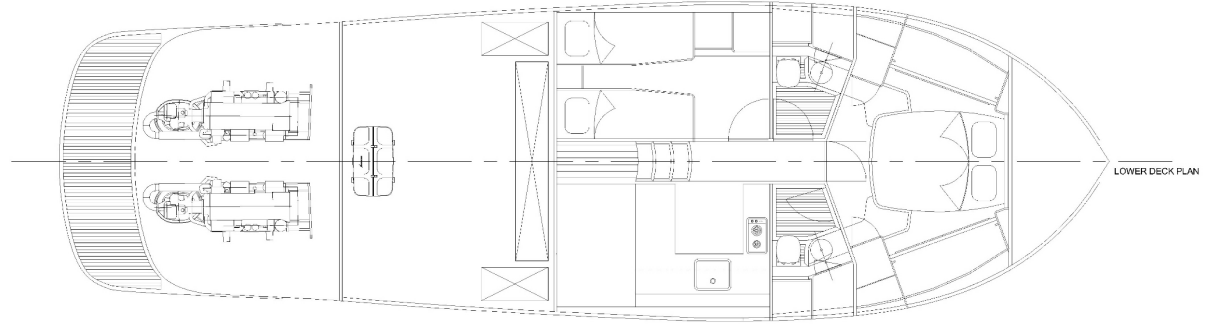
CATEGORY
**Performance
and superboat**

Judged by
MOTOR BOAT **MOTOR BOATS**
MONTICCI

V-55

NEW





L.O.A. 14.60 mt
 L.O.B. 4.80 mt
 Displacement 19 Ton

Design by:
Birel Ernalbant



44



50



55





V-44

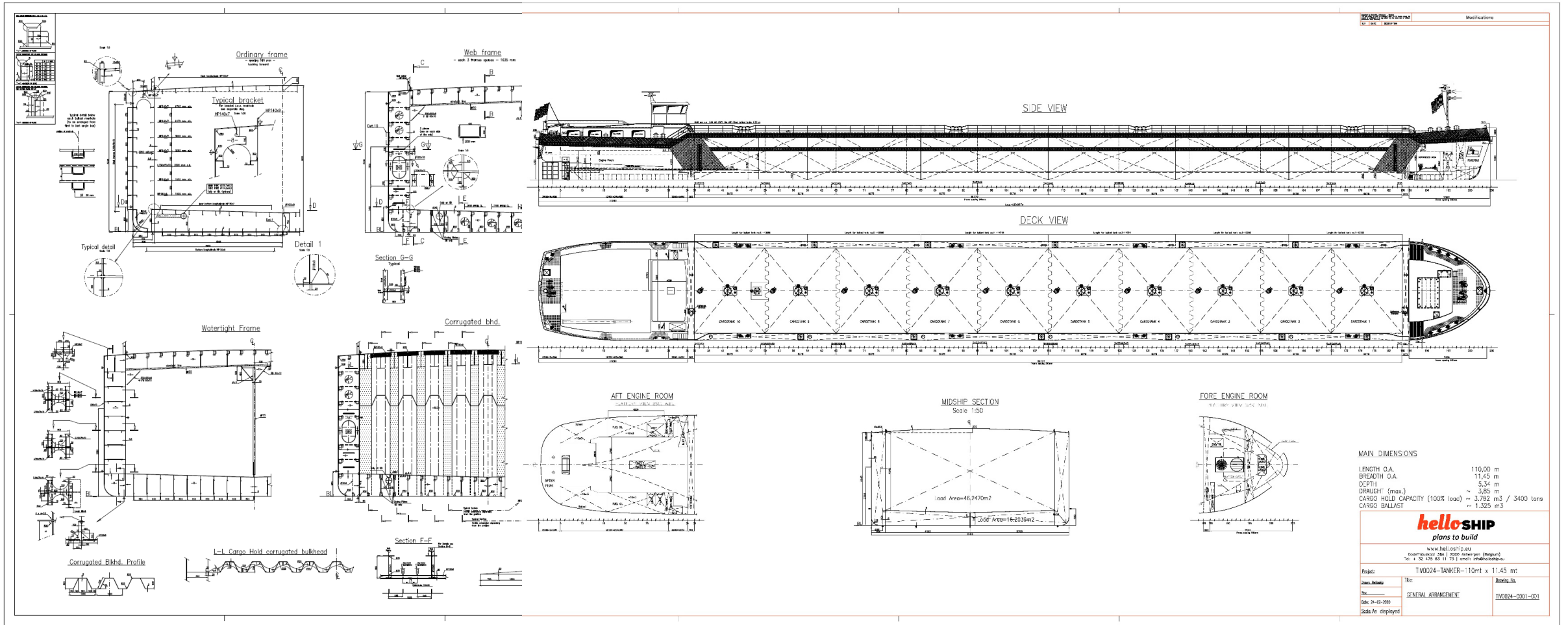


D28



COMMERCIAL VESSELS

INLAND TANKER VESSELS – TUG BOATS – PUSH BOAT NEW OR NEARLY NEW



SPACEBOX DESIGN & PRODUCTION



ERNALBANT

NAUTICAL CONSULTANCY

DESIGN, BUILDING & BROKERAGE

Birol Ernalbant

CEO

BOSDUINSTRAT 74
2990-WUUSTWEZEL-BELGIË

+32 (0) 490 44 00 75
B.ERNALBANT@ERNAUCON.COM



GODEVINE

GLOBAL DEVELOPMENT & INNOVATION

Birol Ernalbant

CEO

+32 (0) 490 44 00 75

B.ERNALBANT@GODEVINE.NL



DIVINAVI

Birol Ernalbant

CEO

Tel: 0032 – 490 44 00 75

b.ernalbant@divinavi.com

www.divinavi.com



DUTCH & TURKISH

BOAT BUILDERS ASSOCIATION

Birol Ernalbant

General Coordinator

+32 (0) 490 44 00 75

B.ERNALBANT@DTBBA.NL

WWW.DTBBA.NL

Birol Ernalbant

birol.ernalbant@helloship.eu
+ 32 490 44 00 75

Office

Godefriduskaai 36 A
2000 Antwerp - Belgium



www.helloship.eu